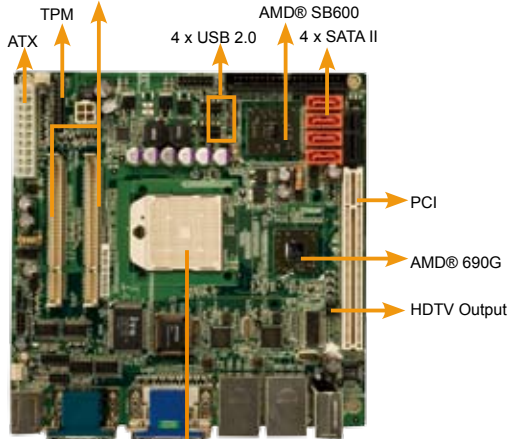


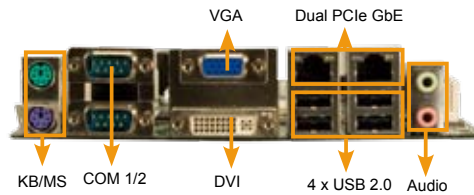
# KINO-690S1

Mini-ITX Motherboard with Socket S1 AMD® Turion 64 x 2, Mobile Sempron CPU, VGA/DVI, Dual PCIe GbE, USB 2.0, SATA II and Audio

2 x DDR2 400/533/667MHz Socket



AMD® Socket S1 Turion 64, Turion 64 x 2, Mobile Sempron



1 Application Server Platform

2 Single Board Computer

3 IBX Series POS PC

4 AFOLLUX POS Panel PC

5 Video Capture Card

6 KAMIO RISC

7 IOVU Open HMI

8 VITO Universal Controller

9 DINO BLADE

10 LCD Product Series

11 Embedded System

12 Industrial Computer Chassis

13 Power Supply

14 Peripherals

## Specifications

- ◆ CPU  
AMD® Socket S1 Turion 64, Turion 64 x 2, Mobile Sempron up to 1600MHz Hyper Transport support
- ◆ System Chipsets  
AMD® 690G + SB600
- ◆ BIOS  
AMI BIOS Label
- ◆ System Memory  
2 X 200 pin SO-DIMM DDR2 400/533/667 MHz up to 2GB
- ◆ Ethernet  
Dual PCIe Broadcom BCM5787M GbE chipsets
- ◆ I/O Interface  
3 x RS-232  
1 x RS-232/422/485  
8 x USB 2.0  
4 x SATA II with RAID 0,1, 10 support  
1 x IDE  
2 x PS/2 for KB/MS  
1 x 20-pin LPC for TPM
- ◆ Expansions  
1 x PCI
- ◆ Digital I/O  
8-bit digital I/O, 4-bit input/ 4-bit output
- ◆ Infrared Interface  
1 x Infrared Interface by pin header
- ◆ Super I/O  
ITE IT8712F
- ◆ Display Interface  
VGA integrated in AMD® 690G  
Support HDTV resolution up to 1080i / 1080p by component interface  
DVI by AMD® 690G with dual display support
- ◆ Audio  
Realtek ALC655 with AC'97 codec
- ◆ SSD  
N/A
- ◆ Watchdog Timer  
Software programmable supports 1 ~255 sec. system reset
- ◆ Power Supply  
AT/ATX Power
- ◆ Power Consumption  
5V@3.65A, 12V@1.12A  
(AMD® Mobile Sempron 3500+ CPU with 512MB DDR2 667MHz)
- ◆ Temperature  
Operating: 0°C ~ 60°C (32°F ~ 140°F)
- ◆ Humidity Operating: 5% ~95% non-condensing
- ◆ Dimensions 170 mm x 170 mm
- ◆ Weight GW: 900 g / NW: 342 g

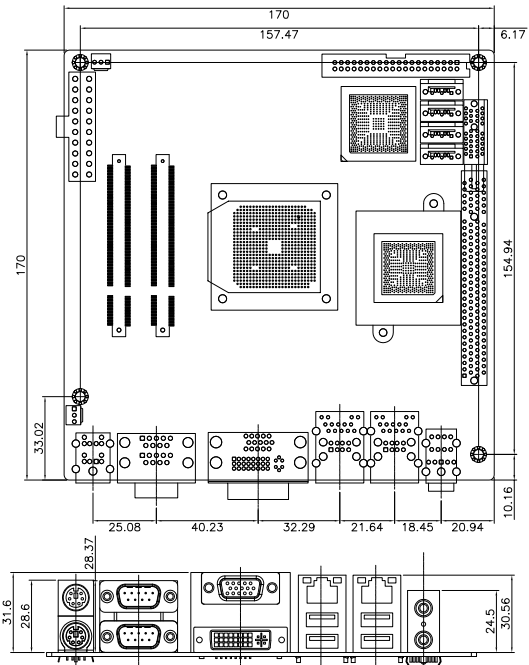
## Packing List

- 1 x KINO-690S1 Single Board Computer
- 1 x ATA66/100 Flat Cable (P/N: 32200-000052-RS)
- 2 x SATA Cable (P/N: 32000-062800-RS)
- 1 x SATA Power Cable (P/N: 32100-088600-RS)
- 1 x Dual RS-232 Cable (P/N: 32200-028401-RS)
- 1 x I/O Shielding (P/N: 45014-0008C0-00-RS)
- 1 x Mini Jumper Pack
- 1 x Utility CD
- 1 x QIG (Quick Installation Guide)

## Features

1. Mini-ITX form factor and RoHS compliant
2. AMD® Turion 64 x 2, Turion 64 Mobile Sempron with 1600MHz Hyper Transport support
3. Support DDR2 400/533/667MHz up to 2GB
4. Support VGA, DVI and HDTV-out with dual display support
5. 4 x RS-232, 8 x USB 2.0 and 4 x SATA II

## Dimensions (mm)



## Ordering Information

Part No.	Description
KINO-690S1-R10	Mini-ITX Motherboard with Socket S1 AMD® Turion 64 x 2, Mobile Sempron CPU, VGA/DVI-TV-out, Dual PCIe GbE, USB 2.0, SATA II and Audio
32200-000077-RS	RS-232/422/485 Cable
CB-USB02-RS	Dual-port USB Cable
CB-USB14-RS	Four-port USB Cable
CF-479B-RS	CPU Cooler
32000-083701-RS	HDTV Output Cable
24105-000045-RS	Mobile AMD® Sempron Single Core 3500+, 1.8GHz; 512KB, 800MHz, TDP 25W, Socket S1 (638pins), RoHS
24105-000060-RS	Mobile AMD® Sempron Single Core 2100+, 1GHz; 512KB, 800MHz, TDP 8W, Socket S1 (638pins), RoHS
24105-000061-RS	AMD® Turion 64x2 Dual Core TL-62, 2.1GHz; 512KBx2, 800MHz, TDP 35W, Socket S1 (638pins), RoHS
24105-000062-RS	Mobile AMD® Sempron Single Core 3700+, 2.0GHz; 512KB, 800MHz, TDP 25W, Socket S1 (638pins), RoHS