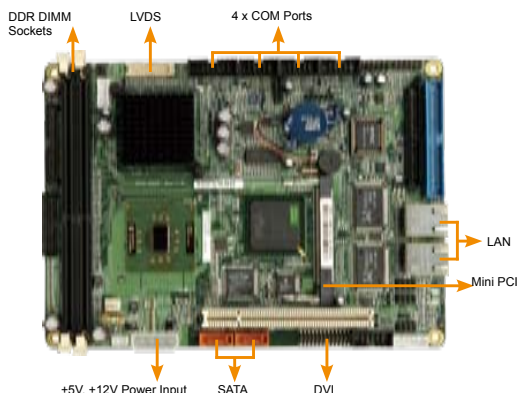
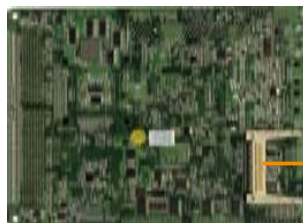


NOVA-8522G2

5.25" SBC, Intel® Pentium® M/ Celeron® M CPU with VGA/ LVDS, VGA, Dual GbE, USB 2.0 and Audio



Solder Side



CF Type II



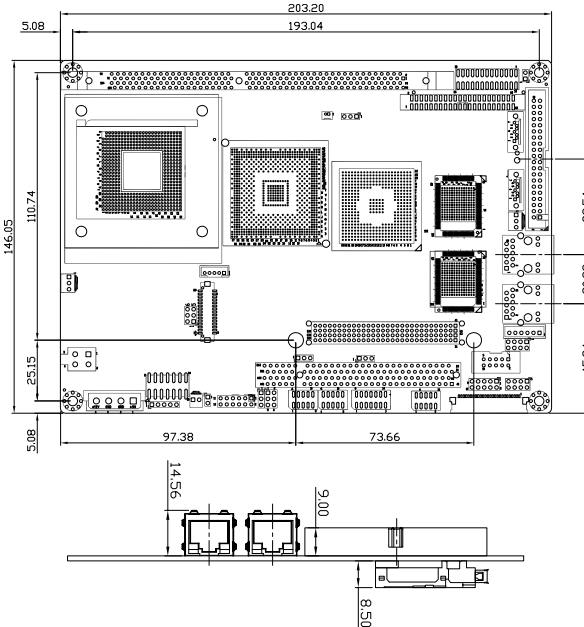
Features

1. Intel® Pentium® M/ Celeron® M CPU with 400MHz FSB
2. VGA integrated in Intel® 852GM and dual-channel 18-bit LVDS support
3. Independent dual display support
4. Dual DDR266MHz support up to 2GB
5. Support PCI and mini PCI
6. CF Type II, LAN, USB 2.0, COM and Audio integrated

Specifications

- ◆ CPU
Socket 479 Intel® Pentium® M, Celeron® M processor with a 533/400MHz FSB
On board Intel® Celeron® M 600MHz 512KB or 1GHz zero cache processor
- ◆ System Chipsets
Intel® 852GM + ICH4
- ◆ BIOS
AMI BIOS
- ◆ System Memory
Two 184-pin 266/200 MHz DDR SDRAM DIMM supported (system max. 2GB)
- ◆ Ethernet
Dual RTL8110SC GbE chipsets or Dual Intel® 82541PI GbE chipsets
- ◆ I/O Interface
2 x IDE
2 x SATA with SIL3512 RAID 0,1 function support
1 x FDD
1 x LPT
1 x PS/2 for KB/MS
3 x RS-232
1 x RS-232/422/485
6 x USB 2.0
1 x CF Type II
- ◆ Audio
Realtek ALC655 with AC'97 codec
- ◆ Expansions
1 x PCI
1 x Mini PCI
- ◆ Digital I/O
8-bit digital I/O, 4-bit input/ 4-bit output by super I/O
- ◆ Infrared Interface
By pin header (SIR mode)
- ◆ Super I/O
W83627HG
- ◆ Display Interface
VGA integrated in Intel® 852GM
18-bit dual-channel LVDS
DVI by Chrontel CH7301
- ◆ Watchdog Timer
Software programable supports 1-255 sec. system reset
- ◆ Power Supply
AT/ATX support
- ◆ Power Consumption
5A@4.10A, +12V@2.36A
(Intel® Celeron® M 1.6G, 400MHz with 2 x DDR333 512MB RAM)
- ◆ Temperature
Operating: 0°C ~ 60°C (32 ~ 140° F)
- ◆ Humidity
Operating: 5% ~ 95%, non-condensing
- ◆ Dimensions
203 mm x 146 mm
- ◆ Weight
GW: 1000 g; NW: 400 g

Dimensions (mm)



Ordering Information

Part No.	Description
NOVA-8522G2-R10	5.25" SBC Intel® Pentium® M/ Celeron® M Processor FSB 400MHz, Dual GbE, SATA and Audio
NOVA-8522G2-600-R10	5.25" SBC Intel® Celeron® M 600MHz 512K Cache Processor, Dual GbE, SATA and Audio
NOVA-8522G2-1GZ-R10	5.25" SBC, Intel® Celeron® M 1GHz Zero Cache Processor, Dual GbE, SATA and Audio
NOVA-8522G2-DVI-R10	5.25" SBC Intel® Pentium® M/ Celeron® M Processor FSB 400MHz, Dual GbE, SATA, Audio and DVI Function
NOVA-8522G2-600-DVI-R10	5.25" SBC, Intel® Celeron® M 600MHz 512K Cache Processor, Dual GbE, SATA, Audio and DVI Function
NOVA-8522G2-1GZ-DVI-R10	5.25" SBC, Intel® Celeron® M 1GHz Zero Cache Processor, Dual GbE, SATA, Audio and DVI Function
NOVA-8522G2N-R10	5.25" SBC Intel® Pentium® M/ Celeron® M Processor FSB 400MHz, Dual GbE, SATA and Audio
NOVA-8522G2N-DVI-R10	5.25" SBC Intel® Pentium® M/ Celeron® M Processor FSB 400MHz, Dual Intel GbE, SATA, Audio and DVI Function
CF-479B-RS	CPU Cooler
32200-000058-RS	FDD Cable
32200-015100-RS	LPT Cable
32100-052100-RS	ATX Power Cable

Packing List

- 1 x NOVA-8522 Single Board Computer
- 1 x IDE Flat Cable 40P/40P/40P (P/N: 32200-000052-RS)
- 1 x KB/PS2 Mouse Cable (P/N: 32000-043301-RS)
- 1 x Audio Cable (P/N: 32000-028800-RS)
- 2 x SATA Cable (P/N: 32000-062800-RS)
- 1 x SATA Power Cable (P/N: 32100-088600-RS)
- 1 x VGA Cable (P/N: 32000-033800-RS)
- 3 x Single RS-232 Cable (P/N: 32200-000015-RS)
- 1 x RS-232/422/485 Cable (P/N: 32200-000063-RS)
- 1 x Pitch USB Cable (P/N: 32000-044300-RS)
- 1 x Mini Jumper Pack
- 1 x Utility CD
- 1 x QIG (Quick Installation Guide)
- 1 x IO-KIT-001A-R20 (DVI model only)